

# kronback tracers

## B16

### RETURN-PATH MONITORING SYSTEM



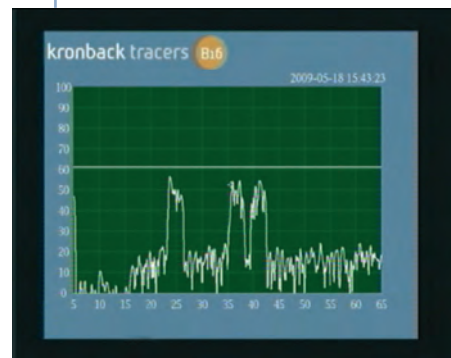
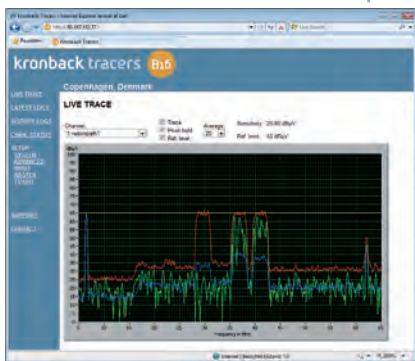
INTRANET

TRIPLE VIEW

WEB

MOBILE

TV



### HIGH PRECISION

- \* Triple view - Access with web, mobile and TV.
- \* Unlimited concurrent users.
- \* Continuous ingress noise measurements for each input.
- \* 24-hour storage of ingress reports for all inputs.

- \* Carrier detection alerts.
- \* Ingress alarm with adjustable thresholds.
- \* Up to 256 inputs per system.
- \* Buy-Per-Input allows flexible expansion.

### TRY TODAY

A live demonstration of the B16 web-enabled interface is available on:  
[www.kronback.com](http://www.kronback.com)

## EXPANSION STACKING EXAMPLE 76 inputs

Input 1-16



Input 17-32



Input 33-48



Input 49-64



Input 65-76



# B16

www.kronback.com.

## RETURN-PATH MONITORING SYSTEM

### HIGH CAPACITY, HIGH FLEXIBILITY

The B16, the flagship of Kronback Tracers' product range, is capable of measuring up to 256 return-path signals (5 - 65 MHz), and presents the spectrum to an unlimited number of concurrent users. For small-size headends, the B16 can be delivered with a buy-per-input license, starting from only one active input.

### TRIPLE VIEW - WEB, MOBILE AND TV

The B16 can be accessed via web, mobile telephone and TV. This gives technicians full access at all locations. The web-based user interface of B16 is powerful, comprehensive and yet intuitive. A Java mobile telephone client is available for accessing the B16. The B16 also provides a video output (PAL or NTSC) that can be transmitted to the CATV network.

### LOGGING

A non-stop logging routine stores samples and saves a snapshot of each input. The history is accessible via the web-based user interface and provides 1.5-hour, 6-hour and 24-hour history snapshots. This enables the user to analyse network performance at a glance. The system stores years of data, and a highly efficient backup routine can extend this period indefinitely.

### INGRESS ALERTS

Intelligent alarm-handling ensures that alarms received from the B16 are relevant and reliable. A sophisticated consolidation routine monitors that each return-path meets the required uptime. An instant alarm routine can send an immediate alert if the ingress noise exceeds the predefined thresholds.

### CARRIER DETECTION ALERTS

The B16 is monitoring the cable modems and, in case of missing activity, an alert will be sent. All alerts can be transmitted via email or SNMP traps.

## SPECIFICATIONS

### RF SPECIFICATIONS

Input 1 - 16:  
Frequency range 5-65 MHz  
Connector: F-type 75 ohm, AC coupled  
Return loss: >20dB  
Isolation between inputs >60 dB

### RF SWITCH

In:  
Frequency range: 5-862 MHz  
Connector: F-type 75 ohm, AC coupled  
Return loss: >20dB@40Mhz, degrading -1.5 dB/octave

### Out:

Frequency range: 5-862 MHz  
Connector: F-type 75 ohm, AC coupled  
Return loss: >20dB@40Mhz, degrading -1.5 dB/octave  
Disconnected mode:  
LED is not lighting  
Insertion loss >60 dB  
Connected mode:  
LED is lighting  
Insertion loss < 1 dB

### VIDEO OUT

Connector: BNC 75 Ohm  
CVBS (Composite video baseband signal)  
TV standard PAL or NTSC (specify on order)

### CONSOLE

Connector:  
RJ45  
RS232 standard  
Communication parameters:  
9600 baud  
8 databit  
1 stopbit  
No parity  
No flow control

### 10/100 BASE-T

10BASE-T: 2-pair UTP/STP  
Cat.3, 4, 5 cable EIA/TIA- 568 100-ohm (100m)  
100BASE-TX: 2-pair UTP/STP  
Cat.5 cable EIA/TIA-568 100-ohm (100m)

### STANDARD COMPLIANCE

IEEE 802.3 10Base-T Ethernet  
IEEE 802.3u 100Base-Tx Ethernet

### SUPPORTS

DHCP  
SNMP-trap, for alerts  
NTP, Network time protocol  
HTTP

### PHYSICAL SPECIFICATIONS

Height 88mm (2 units)  
Width 482 mm (standard 19" dimensions)  
Depth 245mm (9.65")  
Weight 6 kg (13.3 lb)

### ELECTRICAL

Supply Voltage: 90 - 250VAC, 47-63Hz  
Max power consumption: 60 watt  
Power supply connector: IEC  
Double pole on/off switch  
Fuse: 2A T  
Spare Fuse incorporated in IEC socket.

### ENVIRONMENTAL

**OPERATING TEMPERATURE: 5°C ~ 45°C**  
Storage Temperature: -20°C ~ 55°C  
Operating Humidity: 10% ~ 90%, non-condensing  
Fan-less device  
No moving mechanical parts inside.

### SYSTEM

Accuracy ±1 dB  
Max Input level 100 dBuV (1 CW)  
CTB > 60 dBC  
CSO > 60 dBC

### DATA ACQUISITION

Sampling speed 210MS/s  
Resolution 12 bit  
Effective no. of bit (ENOB) 10,6 bit

### FFT (FAST FOURIER TRANSFORM)

Filter type: FLAT TOP  
Filter bw: 300kHz

### INTERNAL ATTENUATION

Att.	Max input level	Sensitivity	Dynamic range
0 dB	70 dBuV	10 dBuV	60 dB
10 dB	80 dBuV	20 dBuV	60 dB
20 dB	90 dBuV	30 dBuV	60 dB
30 dB	100 dBuV	40 dBuV	60 dB

### CERTIFICATION

CE  
FCC

# kronback tracers

Kronback tracers  
Lautrupvang 15  
DK-2750 Ballerup  
Denmark

Phone (+45) 46 907 909  
Fax (+45) 46 907 910

sales@kronback.com  
www.kronback.com

Kronback Tracers is an innovative, rapidly-growing company. We operate globally and our dedicated and experienced staff are ready to serve our customers worldwide. Our philosophy is seeing is believing, so we encourage you to contact our sales organisation to test our products on your premises.

Kronback Tracers assumes no responsibility for the accuracy of this printed information. All specifications are subject to change without notice.